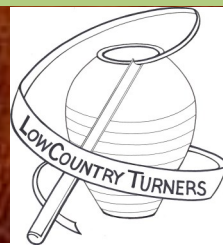


Lowcountry Turners

The "Catch and Cuss" Turners of
Coastal Georgia and South Carolina



LCT Newsletter — January 2021

Inside This Issue

<i>Message From Board</i>	1
<i>Demonstrations, Events, Reminders</i>	3
<i>Recent Work</i>	4
<i>Woodturning Mentors</i>	7
<i>Club Contact Information</i>	8
<i>Woodturning Links</i>	9

Points of Interest

- *New Website Feature*—p. 2
- *Upcoming Symposiums* —p. 3

Message From The Board

LCT Members & Friends,

We are planning to start back again with live woodturning demos beginning March 2021. We will be back in our shop at the Railroad Museum and will be **limiting the number of attendees** so we can comply with, and exceed all recommended Covid-19 protocols. If the Museum returns to pre-Covid operating hours then we will have an evening demo on Thursday, March 25. During this time of uncertainty our website may not reflect the most current date and time of our live demonstrations but our email correspondence will have the current updates regarding our demos.

Until there is some return to normalcy we will need to draw upon the skill and experience of our own members for the next few demonstrations. If you would like to be a demonstrator then please send an email to Dan Lee: danleelowcountryturners@gmail.com .

Roy Yarger is scheduled to be our March demonstrator and his plan is to work on basic fundamentals. Beginner or intermediate - sound fundamentals are essential to woodturning success.

2021 LCT board members:

- Dan Lee—President
- David Anliker—Vice President
- Gary Fleenor—Treasurer
- Mike McDevitt—Dir at Large
- Bob Dichiera—Dir at Large
- Fred Langley—Dir at Large
- Doug McCulloch— Secretary, Communications
- Lonnie Bott—Past President

Doug maintains our contact list, sends out our correspondence and works on our website when time permits. Doug has indicated he would like someone with computer & website skills to take over his position later this year. He would be happy to train someone on the processes to help them get started. If you can help the board with this transition, please let us know.

In January Dan Lee had the pleasure of visiting with fellow LCT member John Britton at John's shop in Bluffton. Below is Dan's impression of John's shop.

Walking into John Britton's workshop, one immediately recognizes the signature of an individual who has experience in keeping facilities safe and efficient. John's workshop has all of the attributes of a well-planned production operation. There is no clutter. There are no tripping hazards. Wide aisles lead to each work center. Dust collection and control is evident throughout the shop.

Message From The Board Continued...

New Website Feature:

We have added two videos of member's shops to the web site, and will be adding more in the months to come. It will be interesting to see the varied workspaces we all have. Our first two videos, including John Britton's shop and Fred Langley's shop are up on a new page called "Shop Videos" (see top menu on web site). Take a look...

If you would like to have our members get a look at your shop, make a video (likely on your smart phone) and call

Doug McCulloch at 678-571-4158

to arrange a way to send it. **Note:** Our shop videos will be uploaded to YouTube, with limited visibility (not Public). If you are not comfortable with this, do not send us a video.

Video Details: Please try to make sure it is in MP4 or MOV format. Keep it to 3 minutes or less. Include any audio you would like to describe your shop.

LCT Membership: LCT demos have always been free and open to the public. Last year we asked that if you paid LCT dues in 2020 then no dues are being requested for 2021 but we did ask that you consider becoming a member of the Coastal Heritage Society (owners of the Railroad Museum) or make a small donation to the Museum. We are very fortunate to have a home here at the RR Museum. If you were not a member last year or if you were and would like to financially support the Lowcountry Turners by becoming or renewing your membership, then please send your \$35 check payable to the Lowcountry Turners c/o Gary Fleenor, Treasurer, 529 East 51st Street, Savannah, 31405.

Take care, stay safe...

Your LCT Board

Upcoming Events, Items of Interest

Upcoming LCT Events:

- **Saturday March 25th 2021—Roy Yarger—Turning Fundamentals** at our normal meeting space at the Railroad Museum. Time TBD, seating will be limited.

Upcoming Symposiums:

**2021 AAW Symposium
Omaha, Nebraska
July 15-18, 2021**

Details to be announced

Recent Work from Our Members

We solicited photos of recent work from our members and they have been busy during the Covid pandemic. Here is a sample of their work:

Al Medlock:



The 1st two photos are of 4oz mason jars With wood lids I turned. I found 12 jars for about 6 bucks on

Amazon, used cut offs from other projects. And they sold like crazy for \$15 bucks each



And second is a chunky Black Walnut bowl. This was commissioned by someone that wanted a heavy bowl....just look at that flame! 11" x 3.5"

I also got a few knives made. - I did not forage the steel! I made the handles from scrap wood. And I get to start back teaching the boys turning at the Paul Anderson Youth Home for Boys on the 12th of Jan!



Fran DiTommaso:



Candy Dish, Crepe Myrtle, Lacquer



Discarded cutting board, oak, lacquer



Parmesan Cheese jar, Pear, Lacquer



Bowl, Unknown burl, Lacquer



Vase, glass insert, Pear, Lacquer



Bowl, Pear, Lacquer



Lidded Box, Banksia Pod, Lacquer

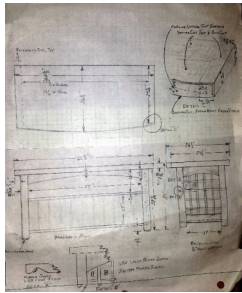


Bowl, Pear, Lacquer

Recent Work from Our Members—Cont.

John Britton:

John has been busy making furniture rather than turnings...Quarter Sawn White Oak Entertainment Table. Made to house the components of our home theatre system. Designed to match the quarter sawn white oak Mission Style furniture of our family room.



Main Build drawing



End Grid Mock Up



Quarter-sawn legs, glued up

Mike St. Onge:



Gnome's made of cedar, popular, walnut, spalted live oak and pine straw all scraps left over from past projects. Each has been sealed and a hand rubbed home made

friction polish. They range from 3-12" - 6" tall and 2" - 3" in diameter, the nose is drilled into the body for a secure fit.

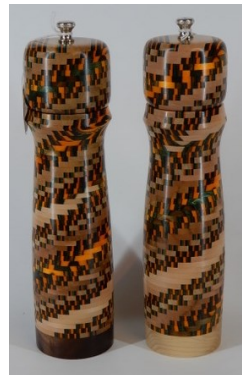


Cherry Crotch wood no finish at this time.

Live edge spalted sugar maple platter with a lacquer finish



Frank Anson:



The ten inch Salt and Pepper Set is based on a Dizzy design. Species include Spectraply, Hard Maple, Black Walnut and Dogwood. Finish is Wipe-on Poly.



The white and tan trees I did at the John C. Campbell school last year. The green ones were new work for the 2020 Christmas season. They are Spectraply and hard Maple and unfinished. About 3 inches tall.

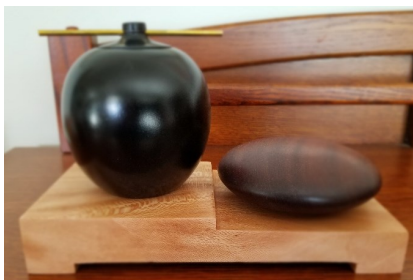
Recent Work from Our Members—Cont.

Roy Yarger:



The vase, 16" tall, is constructed of the following starting from the bottom. Mexican Ebony, Big Leaf Maple, Thin Copper Sheet, Red Mallee Burl, Red/White/Blue veneer, Cherry, Black Limba staves with Holly veneer, Holly segmented ring, Mexican Ebony, Blue/White/Red Veneer and finally Maple Burl. The finish is my usual, General Finishes Oil & Urethane

Second is part of a series I have done. Called Zen It consists of a small box, Eb-
onized Maple,
The stone, Bub-
inga and the



platform is Sycamore. Similar finish.

Fred Langley:



Ambrosia Maple bowl finished with wipe on poly.

Bird house ornament-
Cherry, Maple, Walnut 4
¾" Several made for
grandchildren. Finished
with Mylands friction
polish.



Cherry & Maple Salt & Pepper grinders, 10 inches. Four sets were made as Christmas gifts to family. Finished with Mylands friction polish.

Dan Lee:



Small hollow forms I have made since Thanksgiving. The tallest is 3 1/2". The woods include: hickory, crape myrtle, spalted maple, mimosa, oak, bradford pear, and lowquat.

George Schmedding:



Goblet with 2 interlocking captive rings. The goblet is 6" tall X 2.5" dia. The rings are 1.5" dia and 1.2" dia by about 3/16 thick. The goblet bowl wall it'll is a heavy 1/16". The wood is sepale with a wipe on poly finish.

Steve Altman:

Oak burls, lacquer finish, 5 inches tall



Doug McCulloch:



Large (18") Maple Burl vase, dyed, cut on a bias.

Pink Elm hollow form with pigmented resin finial. Lacquer finish.



DVD/Video Tape Library

Does anyone in the club have any woodturning DVD's they would like to donate or loan to the club to share with other members?

Take advantage of this valuable and money saving resource.

Do you have a suggestion for a DVD you would like to see the club make available to members? If so, talk to a board member.

Woodturning Schools

The following schools in the Southeast offer classes in woodturning, as well as other arts and crafts. Check out their websites to see the scheduled course offerings.

John C. Campbell Folk School www.folkschool.org

Arrowmont School of Arts & Crafts www.arrowmont.org

Highland Woodworking www.highlandwoodworking.com

Appalachian Center for Crafts www.tntech.edu/craftcenter

Woodcraft of Atlanta www.woodcraft.com

LCT Woodturning Mentors

Take your skills to the next level. Have more fun.

The following club members are offering their time and shops to help others in the club on an informal basis with their turning skills or projects. If you have something you would like help with, or just want to spend some time turning with a fellow turner, give them a call or talk to them at a meeting to set something up.

If you would like to be added to this list, contact Doug McCulloch (see Contacts page).

Roy Yarger—Savannah

Lonnie Bott—Savannah

Doug McCulloch—South Savannah / Skidaway

Frank Anson—Beaufort SC, specializing in segmented turning

Noel Wright—Isle of Hope / Savannah

Al Medlock—Vidalia area

Contacts

www.lowcountryturners.com

Meeting Location:
GA State Railroad Museum
655 Louisville Rd, Savannah, GA 31401



The Lowcountry Turners (LCT) is a chapter of the American Association of Woodturners (AAW), dedicated to providing education, information and organization to those interested in woodturning. The LCT services those in the metro Savannah area. We generally meet on the last Thursday of each month at 6:00 P.M. Meeting location varies and will be announced ahead of time in the newsletter and at meetings and demo's. Meetings are open to all.

Name, Position	Phone	Email address
Dan Lee, President	912-704-6736	danleelowcountryturners@gmail.com
David Anliker, Vice President		danliker2@comcast.net
Gary Fleenor, Treasurer		g.fleenor@yahoo.com
Doug McCulloch, Secretary		mcdoug05@gmail.com
Bob Dichiera, Member at Large		bobdact@msn.com
Mike McDevitt, Member at Large		mc7104@comcast.net
Fred Langley, Member at Large		lang7119@me.com
Lonnie Bott, Past President		bottl@comcast.net

Woodturning Links

American Association of Woodturners

www.woodturner.org

Woodturning Association



Case Woodworking Supply

www.casewoodworking.com

1725 Grove Point Rd, Savannah, GA 31419

(912) 927-9000

Woodturning Supplies—tools, equipment, huge variety of turning stock and blanks

Craft Supply

www.woodturnerscatalog.com

800-551-8876

Woodturning Supplies

Packard

www.packardwoodworks.com

800-683-8876

Woodturning Supplies

Klingspor

www.woodworkingshop.com

800-228-0000

Abrasives and woodturning supplies

Highland Woodworking

www.highlandhardware.com

800-241-6748

Woodworking tools, supplies

Peachtree Woodworking Supply Inc.

www.ptreeusa.com

888-512-9069

Turning and carving tools, supplies

Penn State

www.pennstateind.com

800-377-7297

Woodturning tools, supplies

Hut Products

www.hutproducts.com

800-547-5461

Woodturning tools, supplies

Atlanta Wood Products

www.hardwoodweb.com

800-964-7804

Specialty Hardwoods

Woodcraft of Atlanta

www.woodcraft.com

770-587-3372

Woodworking and Hardware

Rockler

www.rockler29.com

800-279-4441

Woodworking and Hardware

Wood magazine Forum

www.woodmagazine.com

Q & A on Woodturning

Closing

This newsletter is published monthly by the Low Country Woodturners, (LCT). All opinions expressed by contributors do not necessarily reflect those of the Editor, Officers, or the LCT.

Woodturning Schools and Instructors listed in this Newsletter are not recommended or endorsed by the LCT, but are made available to the LCT members and others as a convenience only.

Your LCT questions, comments and suggestions are

always welcome. You may contact any officer through the contact information in this newsletter, or our website's contact webpage:
info@lowcountryturners.com.