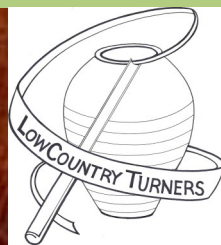


# Lowcountry Turners

The "Catch and Cuss" Turners of  
Coastal Georgia and South Carolina



## LCT Newsletter — May 2019

### Inside This Issue

<i>Message From Board</i>	1
<i>Demonstrations, Events, Reminders</i>	3
<i>LCT Instant Gallery</i>	4
<i>Woodturning Mentors</i>	6
<i>Club Contact Information</i>	7
<i>Woodturning Links</i>	8

### Points of Interest

- *May Demo—p. 1*
- *Community Outreach—p. 1*
- *Calendar—p. 3*
- *Upcoming Symposiums —p. 3*

### Message From The Board

LCT Members & Friends,

Our next meeting and demo will be Thursday May 23rd, 6:00 p.m. at our shop at the Georgia State Railroad Museum, 655 Louisville Road, Savannah. Come early to purchase your raffle tickets. Noel Wright is our demonstrator.

Saturday, June 1st we will have another Open Lathe day. 9:00 a.m. until about noon. Eventually we will be offering classes on the first Saturday of each month. Five LCT members turned and shared stories and techniques on Saturday, May 4th.

We thank our April demonstrator, Roy Yarger. Roy shared with the group different methods he uses to construct Beads of Courage boxes and the tools that he uses. Roy is a supremely experienced demonstrator is always prepared with backup plans in case something goes awry - which something did. The tenon broke out of one of the boxes Roy was turning and without hesitation, he mounted a backup blank on the chuck and continued on.

Also at our April demo we had three visitors from Memorial Hospital's Dwaine and Cynthia Willett Children's Hospital. Lauren Holley, Sarah Tahami and Kristen King. Kristen is Roy's contact for Beads of Courage box donations.

As mentioned last month, we know that our demonstration

meetings are at the dinner hour. You are welcome to bring a sandwich and a non-alcoholic drink to the demo.

**Community Outreach:** On Thursday, April 25th Lonnie Bott spent the day and evening at the Riverside School in Port Royal, SC for their annual K-8 Art Day. Here is Lonnie's take on the day: "The demo at the Riverside Charter School went great. It was nonstop turning from 9:00 in the morning until 7:30 that night. I turned dozens of tops, candle holders and salt urns. The reactions of the kids and their parents were awesome, especially the patterns and the colors on the tops. There were even 6-8 students who came back after school was over to see more and try some simple spindle turning. That night they brought their parents back to see it. All in all it was an exhausting and exhilarating day." Lonnie, thank you for sharing your day with the students at the Riverside School.

Tuesday, June 11th Dan Lee will be turning "Harry Potter Wands" for attendees at the Coastal Heritage Society's Children's Museum's "STEAM Summer Camp". This camp is limited to 15 children ages 7 to 10. Each child will get a wand that they will then take back to Children's Museum and will work on with their camp counselors to finish.

## *Board Message Continued...*

Tuesday, June 25 there will be a second week of "STEAM Summer Camp" but this one will be for ages 4 through 6. The camp counselors will determine if the wands are a good idea for the younger campers. If not, then spin-tops will be on the docket. If spin-tops are chosen, then we will need an additional volunteer to help. The demo will start at 9:30 a.m. and will probably last an hour and a half.

**We do not have a demonstrator for June 24th.** If you would like to be an LCT demonstrator, please speak up. At this moment we don't think we should bring in an out-of-town demonstrator until we have some element of climate control inside our shop. We are trying to work out an HVAC plan with the CHS and Mike McDevitt. We will let you know when/if we come up with something workable.

**Membership in the LCT:** Our monthly demos are free and open to the public. We do, however, encourage attendees to join the Low-country Turners. Dues are only \$35 and 100% of dues are spent on equipment or demonstrators. Please make your check out to "Low Country Turners" and mail to Gary Fleenor, Treasurer at 529 East 51st Street, Savannah, GA 31405.

**Raffle:** Please come early and purchase your raffle tickets from our treasurer, Gary Fleenor. Gary, Roy and David came in and sorted through the box of African hardwood spindle blanks which will be available to you during this raffle. The African hardwoods were donated to the LCT by Chace Holloway, owner of Case Woodworking Supply. As we have mentioned before, Chace has been very generous with his donations to the LCT.



Anyone else who has some wood laying around that they want to turn into funds for the club, bring it to the meeting and let us raffle it off.  
Thanks!

LCT member and past president, Steve Cook was in Cincinnati, OH last month to conduct a demo for the Ohio Valley Woodturners Guild. Steve's reputation as a skilled demonstrator is growing and his geographical footprint is getting larger every year. We are fortunate to have Steve in our membership.

### **Shop Safety:**

- If you find yourself having to push hard to shape your blank on your band saw then your blade is probably dull. As with most tools, a dull blade is dangerous.
- Fatigue leads to mistakes. If you are tired, consider calling it a day. Most mistakes are made when the mind is not sharp or thinking clearly.

### **Other Notes:**

- Please remember to bring to the May demo one or two pieces of your current work to share. Perhaps even a craft type item you think might work in the gift shop.

*Your LCT Board*

## *Upcoming Events, Items of Interest*

### *Upcoming LCT Events:*

All meetings (**unless otherwise noted**) are the last Thursday of each month at 6:00 pm. See Contact page for location information.

- **May LCT Meeting** —6:00 p.m., Thursday , May 23rd - Noel Wright
- **June 1 - Saturday** - LCT shop will be open for members and for classes—9:00am—Noon
- **June 27 - Thursday - Monthly Demo** - demonstrator TBA

### *Upcoming Symposiums:*

#### **The American Association of Woodturners 33rd Annual International Symposium**

Raleigh, North Carolina  
July 11-14, 2019

<https://www.woodturner.org/page/2019RaleighMain>

Too many demonstrators to list, wood vendors, tool vendors, much more. Close to Savannah.

#### **Georgia Association of Woodturners 24th Annual Turning Southern Style 2019**

This year's event will again be held at the Dalton Convention Center in Dalton, GA. With our slate of all-star demonstrators, a large group of vendors, and a great facility, this promises to be one of the largest, most informative and enjoyable symposiums in our 24 year history.

Featured Demonstrators: Stuart Batty, David Ellsworth, Hans Weissflog

<https://gawoodturner.org/symposium/>



## *LCT Instant Gallery / Demo*

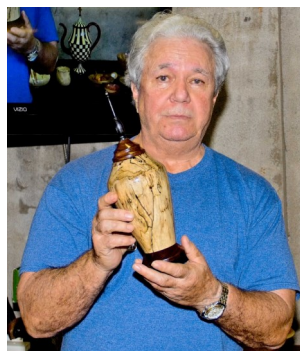
The April meeting brought out more fine work from our members. Our skills are improving. Thanks as always to Fred Langley for the high quality pictures.



Dan Lee—Bradford Pear bowl, Minwax



Fred Langley—Box Elder flared bowl



Fred Langley—Spalted Maple vessel with Rosewood foot and finial, Walnut lid



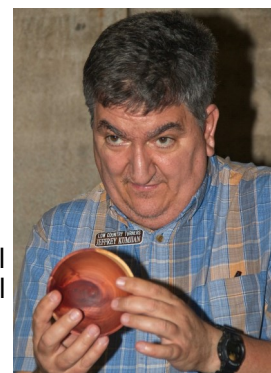
Brian Rickenbacker—Ambrosia Maple bowl from JC Campbell class



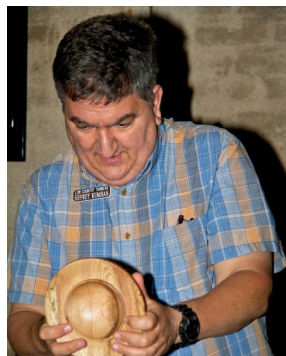
Brian Rickenbacker—2 Bradford Pear bowls, 1 natural edge, 1 straight edge. Wipe on Poly finish



Jeffrey Kumjian—Small lidded box with finial



Jeffrey Kumjian—Small cedar bowl



Jeffrey Kumjian—Oak Bowl

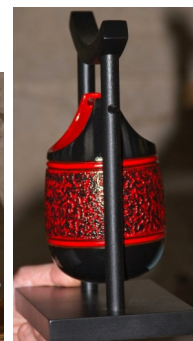
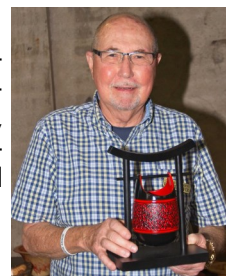


Jeffrey Kumjian—2 small Red Oak bowls



Dick Glover—Tiny long stem goblet

Dick Glover—Cedar suspended vessel, textured, air-brushed





## *LCT Instant Gallery / Demo—Cont.*



Noel Wright—Spalted Hickory (from Hurricane Matthew) lidded box with Ebony knob



Noel Wright—Box Elder vessel with finial



Noel Wright—Box Elder platter with wide rim



Chris Geiger—Amazing segmented coffee pot (too big for a teapot :-). Holly, Peruvian Walnut, Mahogany, Paduk handle

Membership attending the Roy Yarger Beads of Courage demonstration



A representative from the Children's Hospital explaining the Beads of Courage program.

Roy's BoC demo...



Hollowing a 2nd BoC box...



## *DVD/Video Tape Library*

Does anyone in the club have any woodturning DVD's they would like to donate or loan to the club to share with other members?

Do you have a suggestion for a DVD you would like

*Take advantage of this valuable and money saving resource.*

to see the club make available to members? If so, talk to a board member.

## *Woodturning Schools*

The following schools in the Southeast offer classes in woodturning, as well as other arts and crafts. Check out their websites to see the scheduled course offerings.

John C. Campbell Folk School [www.folkschool.org](http://www.folkschool.org)

Arrowmont School of Arts & Crafts [www.arrowmont.org](http://www.arrowmont.org)

Highland Woodworking [www.highlandwoodworking.com](http://www.highlandwoodworking.com)

Appalachian Center for Crafts [www.tntech.edu/craftcenter](http://www.tntech.edu/craftcenter)

Woodcraft of Atlanta [www.woodcraft.com](http://www.woodcraft.com)

## *LCT Woodturning Mentors*

*Take your skills to the next level. Have more fun.*

The following club members are offering their time and shops to help others in the club on an informal basis with their turning skills or projects. If you have something you would like help with, or just want to spend some time turning with a fellow turner, give them a call or talk to them at a meeting to set something up.

If you would like to be added to this list, contact Doug McCulloch (see Contacts page).

**Roy Yarger**—Savannah

**Lonnie Bott**—Savannah

**Doug McCulloch**—South Savannah / Skidaway

**Frank Anson**—Beaufort SC, specializing in segmented turning

**Noel Wright**—Isle of Hope / Savannah

**Al Medlock**—Vidalia area

## Contacts

[www.lowcountryturners.com](http://www.lowcountryturners.com)

**Meeting Location:**  
GA State Railroad Museum  
655 Louisville Rd, Savannah, GA 31401



*The Lowcountry Turners (LCT) is a chapter of the American Association of Woodturners (AAW), dedicated to providing education, information and organization to those interested in woodturning. The LCT services those in the metro Savannah area. We generally meet on the last Thursday of each month at 6:00 P.M. Meeting location varies and will be announced ahead of time in the newsletter and at meetings and demo's. Meetings are open to all.*

<b>Name, Position</b>	<b>Phone</b>	<b>Email address</b>
Dan Lee, President	912-704-6736	danleelowcountryturners@gmail.com
Roy Yarger, Vice President		w.r.yarger@gmail.com
Gary Fleenor, Treasurer		g.fleenor@yahoo.com
Doug McCulloch, Secretary		mccullochmail@mindspring.com
Jon Knotts, Member at Large		jknotts602@gmail.com
David Anliker, Member at Large		danliker2@comcast.net
Ronnie Burgstiner, Member at Large		papachoochoo@comcast.net
Lonnie Bott, Program Chairman	912-313-2230	bottl@comcast.net

## Woodturning Links

### American Association of Woodturners

[www.woodturner.org](http://www.woodturner.org)

Woodturning Association



### Case Woodworking Supply

[www.casewoodworking.com](http://www.casewoodworking.com)

1725 Grove Point Rd, Savannah, GA 31419

(912) 927-9000

Woodturning Supplies—tools, equipment, huge variety of turning stock and blanks

### Craft Supply

[www.woodturnerscatalog.com](http://www.woodturnerscatalog.com)

800-551-8876

Woodturning Supplies

### Packard

[www.packardwoodworks.com](http://www.packardwoodworks.com)

800-683-8876

Woodturning Supplies

### Klingspor

[www.woodworkingshop.com](http://www.woodworkingshop.com)

800-228-0000

Abrasives and woodturning supplies

### Highland Woodworking

[www.highlandhardware.com](http://www.highlandhardware.com)

800-241-6748

Woodworking tools, supplies

### Peachtree Woodworking Supply Inc.

[www.ptreeusa.com](http://www.ptreeusa.com)

888-512-9069

Turning and carving tools, supplies

### Penn State

[www.pennstateind.com](http://www.pennstateind.com)

800-377-7297

Woodturning tools, supplies

### Hut Products

[www.hutproducts.com](http://www.hutproducts.com)

800-547-5461

Woodturning tools, supplies

### Atlanta Wood Products

[www.hardwoodweb.com](http://www.hardwoodweb.com)

800-964-7804

Specialty Hardwoods

### Woodcraft of Atlanta

[www.woodcraft.com](http://www.woodcraft.com)

770-587-3372

Woodworking and Hardware

### Rockler

[www.rockler29.com](http://www.rockler29.com)

800-279-4441

Woodworking and Hardware

### Wood magazine Forum

[www.woodmagazine.com](http://www.woodmagazine.com)

Q & A on Woodturning

## Closing

This newsletter is published monthly by the Low Country Woodturners, (LCT). All opinions expressed by contributors do not necessarily reflect those of the Editor, Officers, or the LCT.

Woodturning Schools and Instructors listed in this Newsletter are not recommended or endorsed by the LCT, but are made available to the LCT members and others as a convenience only.

Your LCT questions, comments and suggestions are

always welcome. You may contact any officer through the contact information in this newsletter, or our website's contact webpage:  
[info@lowcountryturners.com](mailto:info@lowcountryturners.com).